



Bathing establishment Fact Sheet

Name of bathing establishment	Grifomare
Address	Piazzale Tirreno 1
City	Principina a Mare (GR)
Contacts	+39056430226
Website	Not detected

TESTED BY: [Handy Superabile Social Promotion Association](#) in summer 2023

Please note The following information refers to the verification date shown at the bottom of each sheet. The Association is not responsible for any significant changes made to the property after the visit.

Summary

Bathroom	1
Arrival at the facility	2
Private/public parking	2
Route from car park to main entrance	3
Reception reception	4
Bar/restaurant	4
Internal routes and common services	6
Internal routes	6
Toilet and shower accessible to guests with reduced mobility	6
Changing room	8
Beach	9
Children's play area	11
Swimming pool	11
Medical practices/health facilities	11

Project carried out with the contribution of






Project promoted by



Regione Toscana

Arrival at the facility

Private/public parking

Presence of private parking	NO
Public parking nearby	YES
Presence of parking space reserved for people with disabilities	YES
Type of parking lot	ASPHALT
	
	

Project carried out with the contribution of



Presidenza del
Consiglio dei Ministri
Ministro per la disabilità

Project promoted by



Regione Toscana

Pathway from the parking lot to the main entrance

Pathway from the parking lot to the entrance	via 2 ramps: the first is 5 meters long, over 90 cm wide, 11% gradient; second length 4 meters, width greater than 90 cm, slope 6.5%
There are indicators and tactile maps	NO
Useful width of door/entrance passage	greater than 90 cm
	
	

Project carried out with the contribution of



Presidenza del
Consiglio dei Ministri
Ministro per la disabilità



Reception welcome

Umbrella booking system	<input type="checkbox"/> Via web <input checked="" type="checkbox"/> By telephone <input checked="" type="checkbox"/> On site
Presence of multilingual staff	YES
Presence of plant map with legend of services available	NO
Presence of visio-tactile map	NO
Noticeboard/information panels with an average height of 130 cm in a well-lit area and a character size of at least 14 dpi with a contrast ratio greater than 4.5:1	NO
The staff has followed a training course on welcoming people with various disabilities	NO

Bar/restaurant

Type of venue	Bar/restaurant
Access to the venue	flat
Useful width of door/entrance passage	greater than 90 cm
Bar counter	height greater than 100 cm
Type of tables	with 4 legged
Space under the floor tables	65cm
Multilingual menu	YES
Menu with large print characters	NO
Braille menu	NO
Table service for people with disabilities	YES
Availability of food for celiacs	<input type="checkbox"/> bread <input type="checkbox"/> pasta <input type="checkbox"/> biscuits <input checked="" type="checkbox"/> ice cream

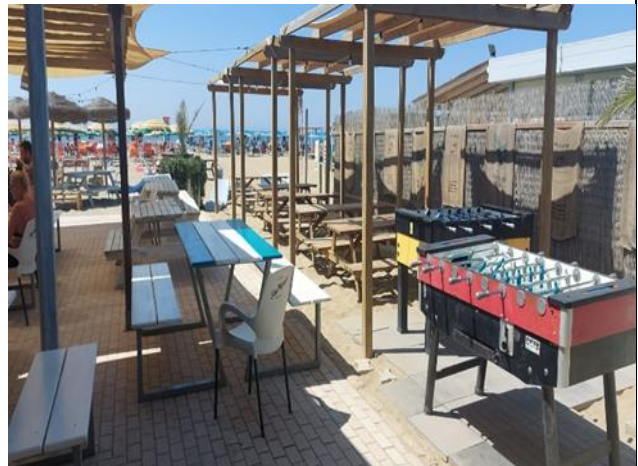


Project promoted by



Regione Toscana

pre-packaged foods



Project carried out with the contribution of



Presidenza del
Consiglio dei Ministri
Ministro per la disabilità



Internal pathway and common services

Internal pathway

Indicate whether the pathways connecting the entrance to the beach are flat or with ramps in addition to those already described	obstacle-free routes
--	----------------------

Toilet and shower accessible to guests with reduced mobility

Number of toilets accessible/usable by guests with reduced mobility	1
Access to the venue	flat
Useful width of entrance door	82cm
Toilet height	50cm
Toilet seat with open front toilet	NO
Support handles	on both sides of the toilet
Flexible shower next to the toilet	NO
Free space on the sides of the toilet	on the left 22 cm on the right greater than 90 cm front greater than 90 cm
Electric bell/telephone	YES
Washbasin with space underneath for a wheelchair	65cm
Height from the ground to the lower edge of the mirror	not sufficient for use by people in a wheelchair
Baby changing table	YES





<p>Shower accessible to guests with reduced mobility available</p>	<p>YES separated from the toilet room</p>
<p>Access to the shower room if separated from the toilet room</p>	<p>flat</p>
<p>Useful width of entrance door/gap if separated from the toilet room</p>	<p>greater than 90 cm</p>
<p>Shower type</p>	<p>open type</p>
<p>Floor-level shower</p>	<p>YES</p>
<p>Shower chair</p>	<p>missing</p>
<p>Support handle</p>	<p>NO</p>
<p>Presence of shower head or latch</p>	<p>fixed shower head</p>
<p>Electric bell/telephone</p>	<p>NO</p>



Project promoted by



Regione Toscana



Changing room

Changing room accessible to guests with reduced mobility available

NO

Project carried out with the contribution of



**Presidenza del
Consiglio dei Ministri**
Ministro per la disabilità

Project promoted by



Regione Toscana

Beach

Type of beach	sand
Access to the beach	flat
Walkway to reach the umbrellas	YES
Type of walkway	in PVC
Walkway width	100cm



Project carried out with the contribution of




Presidenza del
Consiglio dei Ministri
Ministro per la disabilità

Project promoted by



Regione Toscana

Removable Platform between the walkway and the umbrella station to facilitate the passage and parking wheelchair	YES
Amphibious beach chair available for helping people with reduced mobility to enjoy swimming (owned by the establishment or by association)	YES
	
Sea Project membership for all	www.news.comune.grosseto.it

Project carried out with the contribution of



**Presidenza del
Consiglio dei Ministri**
Ministro per la disabilità

Project promoted by



Regione Toscana

Children's play area

Children's play area	Not detected
----------------------	--------------

Pool

The property has a swimming pool	NO
----------------------------------	----

Medical practices/health facilities

Hospitals near the facility	Misericordia Grosseto Hospital Tel 0564 485111
-----------------------------	--

TESTED BY: Handy Social Promotion Association. Superb in summer 2023

Project carried out with the contribution of



**Presidenza del
Consiglio dei Ministri**
Ministro per la disabilità